



POLY  
**LANEMA**

ENGINEERING  
**PLASTICS**  
AND TECHNICAL **ALUMINIUM**



# CONTENTS

— What we do, we do for our customers	03
— What are the advantages that you can obtain from our process	04
— Benefit your project with our knowledge	06
— Don't get delayed with your projects! We have the material	08
— Engineering plastics	10
— Technical aluminium	12
— Linear and circular cutting services	14
— Reduce your costs with our water jet cutting service	16
— Sustainability	18
— We keep and take care of your stock	20
— Each client a partner	21
— Why Poly Lanema?	22



## WHAT WE DO, WE DO FOR OUR CUSTOMERS

ENGINEERING PLASTICS AND TECHNICAL ALUMINIUM

The more than 25 years of history of Poly Lanema, Lda, and the entire Lanema Group, can be summed up in a continuous dedication to our customers' needs and a regular attention to the demands of the several markets in which they operate.

In order to be able to follow and support our customers to face their own challenges, we have, in addition to the passion for what we do:

- **Accumulated know-how in the areas of engineering plastics and technical aluminium;**
- **Know-how based on Research and Development;**
- **Invested in innovation in a continuous manner.**

The customer is the focus of our action and, on a daily basis, ethics, dedication, professionalism, commitment to quality and respect for the environment, have allowed us to be worthy of your trust.

It is thanks to an optimized, balanced and certified combination of a specialized multidisciplinary team, with the most advanced technical means, that Poly Lanema, Lda. creates value for its customers/partners, from the recommendation of materials to the optimized cut of each part.





### BENEFIT YOUR PROJECT WITH OUR KNOWLEDGE

Specialized team, prepared to recommend the best solution for each customer



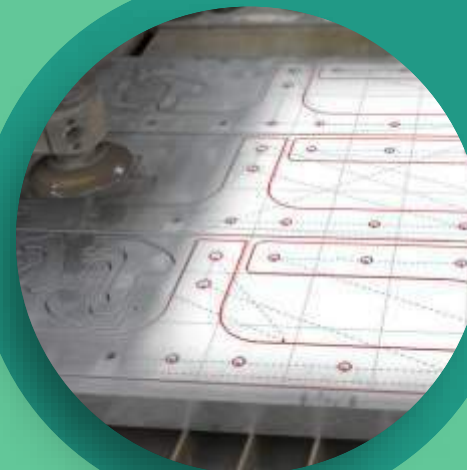
### PRECISION AND OPTIMIZATION AT YOUR DISPOSAL

Different cutting solutions mean that we have the tool for the work you need



### WE KEEP AND TAKE CARE OF YOUR STOCK

Optimized storage process with the possibility of deliveries within 24h/48h



### WE SUPPLY THE IDEAL MATERIAL FOR YOUR APPLICATION

We have a large quantity and variety of engineering plastics and technical aluminium so that you don't get behind with your projects.



## WHAT ARE THE ADVANTAGES THAT YOU CAN OBTAIN FROM OUR PROCESS



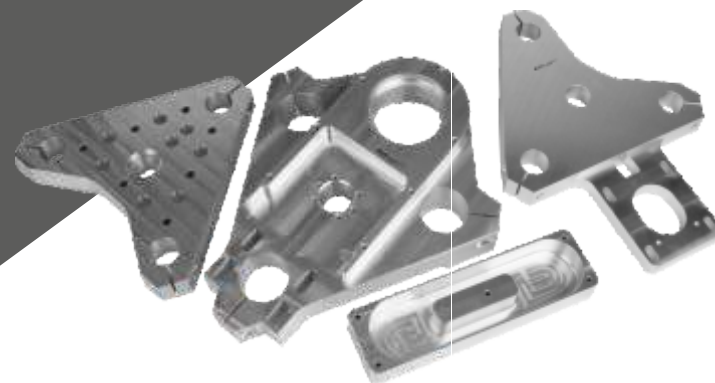
### REDUCE YOUR COSTS WITH OUR CUTTING SERVICE

Through specific programs of dimensional use, we obtain optimized nesting, therefore reducing waste.





- / 25 Years of know-how in the areas of engineering plastics and technical aluminium
- / Highly qualified technical teams
- / ISO 9001 Certification
- / AS 9100 and AS 9120 Certification
- / Modern high precision cutting equipment
- / Multi-industrial experience and knowledge
- / Quality control in accordance with the most modern rules and procedures



## BENEFIT YOUR PROJECT WITH OUR KNOWLEDGE

"KNOW-HOW", EXPERIENCE AND CERTIFICATION

Poly Lanema, Lda's business path, based on the fundamental principle of quality, is characterized by a solid and ongoing evolution, having achieved the status of national and international reference in the engineering plastics and technical areas.

This performance level is mainly due to:

- the full dedication to each project and each customer by our young, experienced, highly qualified and multidisciplinary team both in terms of materials consultancy and production/cut level.

- the fact that we only deal with materials (engineering plastics and technical aluminium) according to the highest internal performance and quality standards, whose traceability we can ensure, when necessary.

- giving support our clients so that their projects are increasingly competitive, obtaining, for example, reductions in their own production costs, which go beyond the cost of the material.



Best Technical  
Solution



Quality  
Assurance



Cost  
reduction



DON'T GET BEHIND  
WITH YOUR PROJECTS!  
**WE HAVE THE  
MATERIAL**



Best Technical  
Solution



Quality  
Assurance



Delivery  
Times



Cost  
Reduction





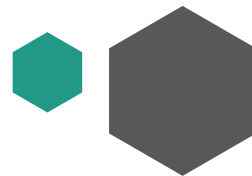


/ “Made in Europe”  
Certified materials

/ Material  
Traceability

/ Specific stock  
capability with each  
customer in mind

# ADVANTAGES OF ENGINEERING PLASTICS



LOW **WEIGHT/**  
**DENSITY**



**THERMAL**  
INSULATION



**FDA/EU FOOD**  
**APPROVED**  
ACC. (EU) 10/2011



RESISTANCE  
TO **IMPACT**



**ACOUSTIC**  
INSULATION



**ELECTRICAL**  
INSULATION



RESISTANCE  
TO **CORROSION**



**FLAME**  
RETARDATION



**DOESN'T NEED**  
**PAINTING**

## ENGINEERING PLASTICS

POM	ERTACETAL C <sup>®</sup>	—	■	●	○
	ERTACETAL H <sup>®</sup>	—	■	●	○
	ERTACETAL H-TF <sup>®</sup>	—	■	●	○
	ACETRON MD <sup>®</sup>	—	■	●	○
PA	ERTALON LFX <sup>®</sup>	—	■	●	○
	ERTALON 4.6 <sup>®</sup>	—	■	●	○
	ERTALON 6 PLA <sup>®</sup>	—	■	●	○
	ERTALON 6 PLAM <sup>®</sup>	—	■	●	○
	ERTALON 6 SA <sup>®</sup>	—	■	●	○
	ERTALON 6 XAU+ <sup>®</sup>	—	■	●	○
	ERTALON 66 GF30 <sup>®</sup>	—	■	●	○
	ERTALON 66 SA <sup>®</sup>	—	■	●	○
	NYLATRON GS <sup>®</sup>	—	■	●	○
	NYLATRON GSM <sup>®</sup>	—	■	●	○
PET	NYLATRON LFG <sup>®</sup>	—	■	●	○
	NYLATRON MC901 <sup>®</sup>	—	■	●	○
PC	NYLATRON NSM <sup>®</sup>	—	■	●	○
	NYLATRON 703 XL <sup>®</sup>	—	■	●	○
PE	ERTALYTE <sup>®</sup>	—	■	●	○
	ERTALYTE TX <sup>®</sup>	—	■	●	○
PE	PC 1000 <sup>®</sup>	—	■	●	○
	POLIETILENO PE-HD <sup>®</sup>	—	■	●	○
	TIVAR Ceram P <sup>®</sup>	—	■	●	○
	TIVAR DrySlide <sup>®</sup>	—	■	●	○
	TIVAR DS <sup>®</sup>	—	■	●	○
	TIVAR CESTIDUR <sup>®</sup>	—	■	●	○
	TIVAR ECO <sup>®</sup>	—	■	●	○
	TIVAR HOT <sup>®</sup>	—	■	●	○
	TIVAR SuperPlus <sup>®</sup>	—	■	●	○
	TIVAR TECH <sup>®</sup>	—	■	●	○
	TIVAR 88 <sup>®</sup>	—	■	●	○
	TIVAR 1000 antistatic <sup>®</sup>	—	■	●	○
	TIVAR 1000 <sup>®</sup>	—	■	●	○
	TIVAR 1000 ASTL <sup>®</sup>	—	■	●	○

## GENERAL USE PLASTICS

POLYPROPYLENE	—	■	●	○
POLYURETHANE	—	■	●	○
TPE	—	■	●	○
PVC	—	■	●	○
PTFE	—	■	●	○

— sheet   ■ plate   ● bar   ○ tube

## HIGH PERFORMANCE PLASTICS

DURATRON <sup>®</sup>	—	■	●	○
FLUOROSINT <sup>®</sup>	—	■	●	○
KETRON PEEK CA30 <sup>®</sup>	—	■	●	○
KETRON PEEK GF30 <sup>®</sup>	—	■	●	○
KETRON PEEK HPV <sup>®</sup>	—	■	●	○
KETRON PEEK 1000 <sup>®</sup>	—	■	●	○
PEI 1000 <sup>®</sup>	—	■	●	○
PSU 1000 <sup>®</sup>	—	■	●	○
PVDF 1000 <sup>®</sup>	—	■	●	○
SEMITRON <sup>®</sup>	—	■	●	○
TECHTRON HPV PPS <sup>®</sup>	—	■	●	○

## TRADEMARKS POLYLANEMA

PET	BLAUHOG <sup>®</sup>	—	■	●	○
	DURESTER <sup>®</sup>	—	■	●	○
PE	DURESTER-TX <sup>®</sup>	—	■	●	○
	MEGALENE <sup>®</sup>	—	■	●	○
PC	SODER VERT <sup>®</sup>	—	■	●	○
	SODER 500 <sup>®</sup>	—	■	●	○
POM	SODER PC <sup>®</sup>	—	■	●	○
	SODER POM <sup>®</sup>	—	■	●	○
PA	POLY -ESD <sup>®</sup>	—	■	●	○
	SODER-6 <sup>®</sup>	—	■	●	○
	SODER-6 NATUR <sup>®</sup>	—	■	●	○
	SODER-OL <sup>®</sup>	—	■	●	○

## COMPOSITES

BAKELITE	—	■	●	○
CELERON	—	■	●	○
MIKLA 990	—	■	●	○
TERVID EP 155F	—	■	●	○
TERVID EP 180H	—	■	●	○



/ **"Made in Europe"**  
**Certified materials**

/ **Material**  
**Traceability**

/ **Specific stock**  
**capability with each**  
**customer in mind**

## ADVANTAGES OF TECHNICAL ALUMINIUM



LOW **WEIGHT/**  
**DENSITY**



EASY  
**MACHINING**



EXCELLENT THERMAL  
**CONDUCTIVITY**



EXCELLENT RESISTANCE  
**TO CORROSION**



**RECYCLABLE**



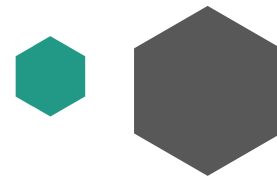
**GOOD COLD**  
**CONFORMATION**



ALTERNATIVE  
**TO STEEL**  
Brinell hardness up to 180hb



TREATABLE  
**SURFACE**



### STANDARD ALLOYS

ALLOY 1050A	—			
ALLOY 2007		●	■	
ALLOY 2011		●	■	
ALLOY 2017A	—	■	●	■
ALLOY 2024		■		
ALLOY 2030		●	■	
ALLOY 5005	—			
ALLOY 5083	—	■	●	
ALLOY 5083 rectified		■		
ALLOY 5754	—	■	●	
ALLOY 5754 anti-skid	—			
ALLOY 6026		●		
ALLOY 6060		●		
ALLOY 6061		■		
ALLOY 6082		■	●	○
ALLOY 6262		●		
ALLOY 7021		■		
ALLOY 7075		■	●	○

### TRADEMARKS

ALUMOLD-500®	■
CERTAL®	■
CERTAL SPC®	■
HOKOTOL®	■
WELDURAL®	■

### ALLOY 6063 BARS/PROFILES

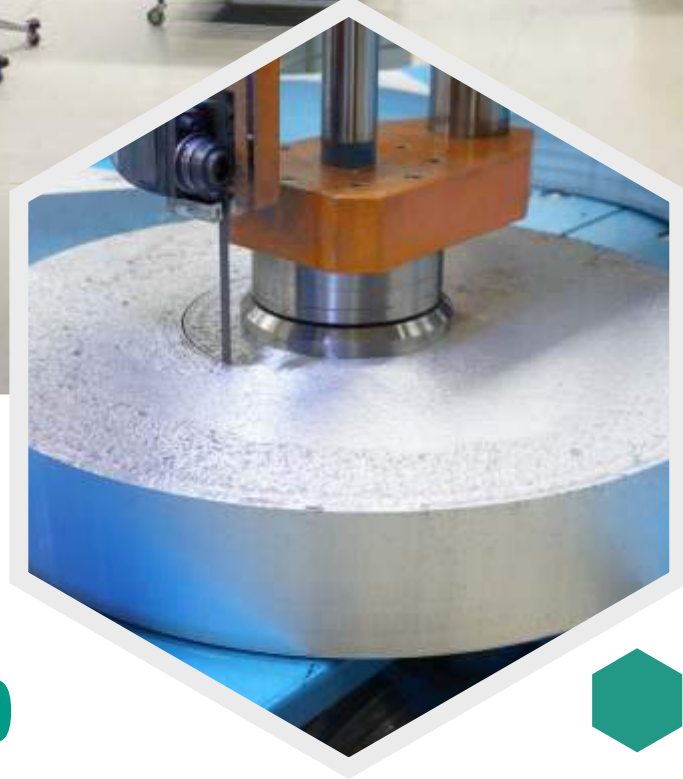
BAR	■	●	■
TUBE PROFILE	□	○	□
SIDES "L" PROFILE =	L		
SIDES "L" PROFILE ≠	L		
"U" PROFILE	U		
"H" PROFILE	H		
"T" PROFILE	T		

### TRADEMARKS POLYLANEMA

AL-TUB®	■
REDON-DUR®	●
REDON-SUPERMEC®	■
REDON-2011®	●
SERTU-DUR®	■
SERTU-MEC®	■
SERTU-MAG®	■
SERTU-SUPERMEC®	■
SERTU-TOP®	■

— sheet ■ plate ● bar ○ tube ■ square ■ rectangular





## LINEAR AND CIRCULAR CUTTING SERVICES

**6** **Machines**  
cutting up to  
3000x2000x800mm

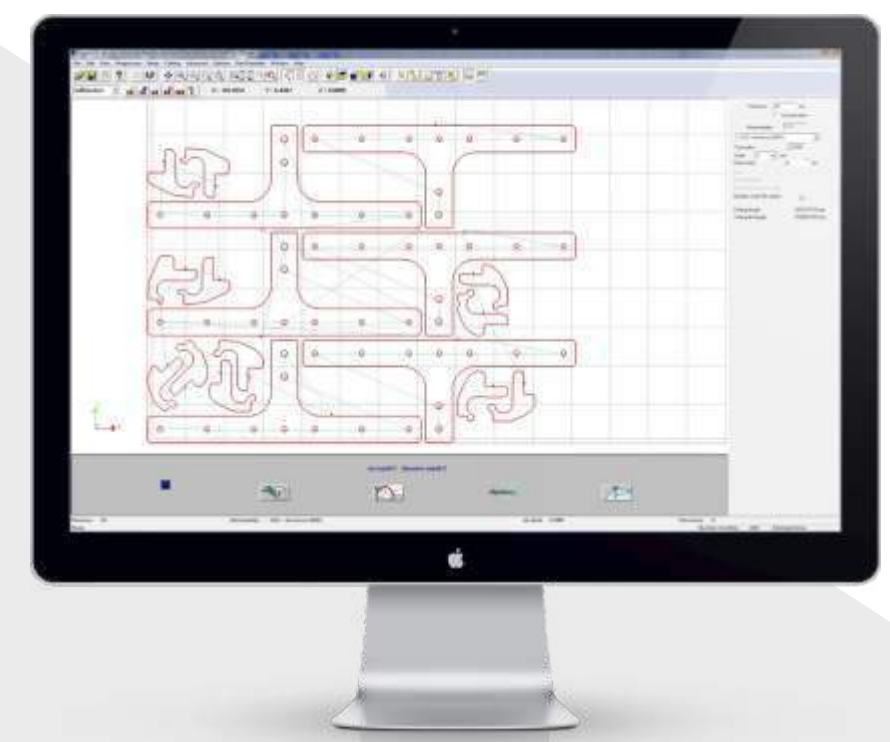
**5** **Machines**  
ring and round cutting  
up to Ø 2500mm



## ADVANTAGES

- Cut to measure to reduce your costs with material
- Buy only what you need, we take care of the excess
- Delivery times within 24h/48h
- High squared and precision
- Different types of cut
- Specific equipment to ensure cutting integrity
- Waste sorting by aspiration and recycling





# REDUCE YOUR COSTS WITH OUR **WATER JET** CUTTING SERVICE

In order to provide our customers with the most modern cutting tools in the market, we invested in last generation equipment, namely water jet cutting equipment.

Thanks to these additional resources, we were able to increase our delivery times and reduce the costs to our clients in a significant manner, namely through the better use of the material and due to the fact that we have a full offer of materials and services in one single place, which results in time and money savings for our customers.

**4 Machines**  
5-axis water jet cutting machines up to 6000x2000x200mm with tilting up to 60°



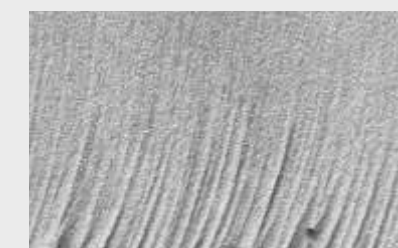
## TYPES OF FINISH



Fine  
Cut



Medium  
Cut



Thick  
Cut

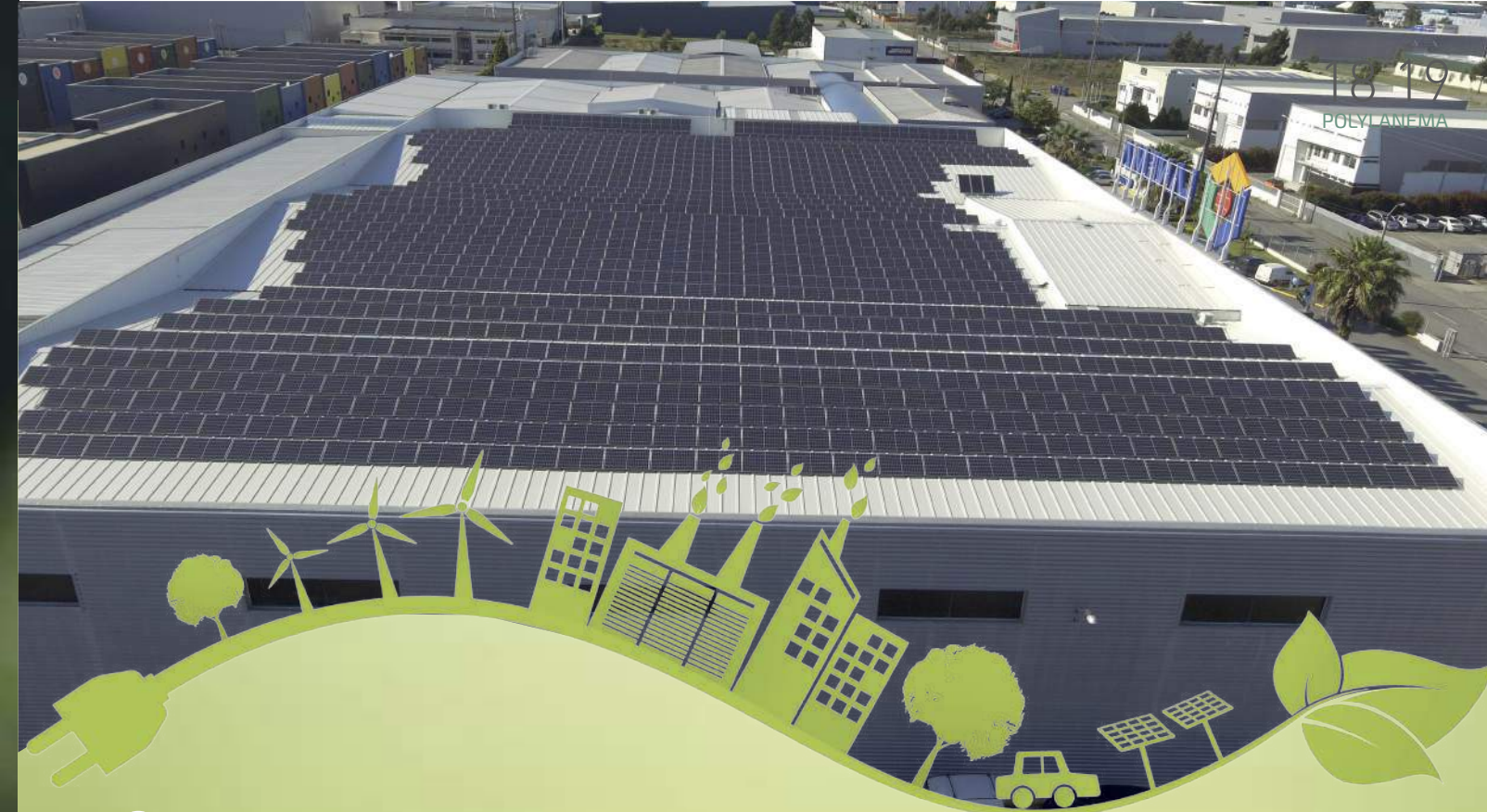


Production time / Cost

## ADVANTAGES

- Waste reduction through specific dimensional use programs
- Average execution time in 24h/48h
- Reduced machining time
- Complex 5-axis cuts
- Cold cut, without molecular change of material
- We cut several types of material
- We do the 3D drawing (CAD)
- Clean and burr free cuts
- More precise and faster than other conventional cuts





## SUSTAINABILITY

LANEMA GROUP GETTING GREENER







## WE KEEP AND **AND TAKE CARE OF YOUR STOCK**

Our entire work process is based on a delivery capability tailored to each customer, which in turn results in better delivery times and a significant cost reduction for the customers.

Thanks to our automated warehouse, essentially for finished parts, we can manage deliveries to our customers in an optimized and fast manner, including deliveries within 24h/48h, if necessary.

Moreover, and because we can store parts for customers, if they so wish, we can achieve cost savings for our customers in the following manners:

- **logistical cost reduction through better cargo management.**
- **storage cost reduction when performing this service for the customer.**

In short, the combination of all our capabilities and competences results in the above-mentioned set of benefits for our customers, and this is something within the reach of few companies, even with an international dimension.



## EACH **CLIENT A PARTNER**

At Poly Lanema our crucial goal is an increasingly closer relationship with our customers and partners. In order to achieve this, we will continue to combine knowledge, experience, ability and dedication to guarantee the supply of high-quality products and services in a sustained and continuous manner.

Such close relationship, which we hope will be understood as one of partnership with our customers, takes on, according to our understanding, the form of true levels of satisfaction and loyalty, because that is the only way to know that we are contributing to their growth in a positive and decisive manner.





# WHY POLY LANEMA?

Wishing to be part of present and future projects of all our customers, we list below some of Poly Lanema's most remarkable characteristics and competitive advantages:

- / **Continuous focus on customer needs**
- / **"Know-how" accumulated over 25 years**
- / **Multi-industrial experience and knowledge**
- / **Continuous modernization and training strategy**
- / **Partnerships with some of the main European suppliers of materials**
- / **Unique team + process + technology combination**
- / **Cutting centre with cutting edge technology and different technical solutions**

Thank you for allowing us to be part of the success of your projects!



## SHAPING YOUR PROJECTS

### LANEMA GROUP IN THE WORLD

Germany / Angola / Austria / Brazil / Cape Verde / Chile / China / Colombia / Croatia / Spain / United States / Estonia / France / Holland / India / Italy / Luxembourg / Macedonia / Mexico / Mozambique / Portugal / United Kingdom / S. Tomé and Príncipe / Switzerland / Tunisia



WWW.  
POLYLANEMA.  
PT







## SHAPING YOUR PROJECTS

WWW.  
POLYLANEMA.  
PT



**Poly Lanema, Lda.**  
Zona Industrial de Ovar  
Rua do Brasil, N.º 143  
3880-108 Ovar - Portugal

T: +351 256 581 400  
F: +351 256 581 419

GPS: 40° 52' 55.164" -8° 37' 30.8742"  
polylanema@lanema.pt

Co-financed by:

