

POLY

LANEMA

**ENGINEERING
PLASTICS**
& ALUMINIUM



ABOUT **POLY LANEMA**

Poly Lanema is a company within the Lanema Group, headquartered in Ovar, with over 30 years of experience. It operates primarily in two distinct areas: the trade of Engineering Plastics and Aluminum, and the sale of Standard Products, complemented by one of the most advanced cutting centers in Europe. With a wide range of Engineering Plastics and Technical Aluminum, we maintain a stock of over 3,000 tons, along with a specialized team to analyze and recommend the best solutions for our clients' projects.

Thanks to a modern logistics system and a next-generation warehouse, we also offer a wide selection of Standard Products such as bushings and keys.

We are a family business with a solid track record of dedication and commitment. Founded on values such as trust, respect, and teamwork, we have grown over the years while staying true to our roots. We are currently in the second generation of management, ensuring continuity of our vision and the excellence that has always defined us.





Years of experience

Certifications

Covered area in m²

Number of clients

Orders
processed

Kilograms sold

Euros in stock

On-time delivery rate

Number of pieces cut

*K - thousand
*M - million



INDUSTRIES WE WORK WITH

- / 35 years of knowledge and experience in engineering plastics and aluminum
- / Highly qualified technical teams
- / ISO 9001, AS 9100 and AS 9120 certifications
- / Modern high-precision cutting equipment
- / Multi-industry experience and expertise
- / Quality control in accordance with the latest standards and procedures



Best Technical
Solution



Quality
Assurance



24/48H
Delivery



Cost
Reduction

Don't delay
your projects,
**WE HAVE
THE MATERIAL.**

ADVANTAGES OF ENGINEERING PLASTICS



LOW WEIGHT /
DENSITY



THERMAL
INSULATION



IMPACT
RESISTANCE



ACOUSTIC
INSULATION



CORROSION
RESISTANCE



ELECTRICAL
INSULATION



NO NEED FOR
PAINTING



FLAME
RETARDANCY



FDA/EU FOOD
APPROVAL
ACC. (EU) 10/2011

ENGINEERING PLASTICS

POM	ERTACETAL® C		
	ERTACETAL® H		
	ACETRON® VMX		
	ERTALON® LFX		
PA	ERTALON® 4.6		
	ERTALON® 6 PLA		
	ERTALON® 6 SA		
	ERTALON® 6 XAU+		
	ERTALON® 66 GF30		
	ERTALON® 66 SA		
	NYLATRON® GS		
	NYLATRON® GSM		
	NYLATRON® SLG		
	NYLATRON® MC901		
	NYLATRON® NSM		
	NYLATRON® 703 XL		
PET	ERTALYTE®		
	ERTALYTE® TX		
PC	PC 1000		
	POLIETILENO PE -HD		
	TIVAR® TECH		
	TIVAR® Ceram P		
	TIVAR® DS/CESTIDUR		
	TIVAR® SuperPlus		
	TIVAR® H.O.T.		
	TIVAR® 1000		
	TIVAR® 1000 EC		
	TIVAR® 1000 TG1		
PE	TIVAR® 1000 Antistatic		
	TIVAR® 1000 ASTL		
	TIVAR® Dryslide		
	TIVAR® QuickSilver		
	TIVAR® 88		
	TIVAR VMX		

GENERAL USE PLASTICS

POLIPROPILENO		
POLIURETANO		
PVC		
PTFE		

HIGH-PERFORMANCE PLASTICS

DURATRON® PAI		
FLUOROSINT®		
KETRON® PEEK CA30		
KETRON® PEEK GF30		
KETRON® PEEK HPV		
KETRON® PEEK 1000		
DURATRON® PEI 1000		
SULTRON PSU 1000		
PVDF 1000		
SEMITRON®		
TECHTRON® HPV PPS		

POLY LANEMA TRADEMARKS

BLAUHOG®		
DURESTER®		
DURESTER®- TX		
ME GALENE®		
SODER® VERT		
SODER® 500		
SODER® PC		
SODER® POM		
POLY-ELS		
SODER®-6		
SODER®-6 NATUR		
SODER®-OL		

COMPOSITES

BAQUELITE		
CELERON		
MIKLA 990		
TERVID EP 155F		
TERVID EP 180H		

— sheet — plate ● bar ○ tube

ADVANTAGES OF ALUMINUM



LOW WEIGHT /
DENSITY



RECYCLABLE
MATERIAL



EASY
MACHINING



GOOD COLD
CONFORMATION



ALTERNATIVE
TO STEEL
Brinell hardness
up to 180HB



TREATABLE
SURFACE



EXCELLENT
THERMAL
CONDUCTIVITY



EXCELLENT
CORROSION
RESISTANCE

STANDARD ALLOYS

AW 2007		●	■
AW 2011		●	
AW 2017A	—	●	
AW 2030		●	■
AW 5005	—		
AW 5083 Laminate	—	—	
AW 5083 Rectified	—	—	
AW 5083 CAST		—	
AW 5754	—		
AW 5754 Non-slip 5 Bar	—		
AW 5754 Non-slip 2 Bar	—		
AW 6082	—	—	● ■
AW 6082 Rectified		—	
AW 7021		—	
AW 7021 Rectified		—	
AW 7075	—	—	●
AW 7075 Rectified		—	

PROFILES AW 6060/ 6063

BAR	■ ● ■
TUBE PROFILE	□ ○ □
"L" PROFILE SIDES =	L
"L" PROFILE SIDES ≠	L
"U" PROFILE	U
"H" PROFILE	H
"T" PROFILE	T

AEROSPACE ALLOYS

AW 2024	— ●
AW 6061	— ●
AW 7050	—
AW 7175	—

TRADEMARKS

ALUMOLD® - 500	—
CERTAL®	—
CERTAL® SPC	—
HOKOTOL®	—
WELDURAL®	—

POLY LANEMA TRADEMARKS

AL-TUB®	—
REDON®-DUR	●
REDON®- SUPERMEC	
REDON®-2011	— ●
SERTU®-DUR	—
SERTU®-MEC	—
SERTU®-MAG	—
SERTU®- SUPERMEC	—
SERTU®- TOP	—

— sheet — plate ● bar ○ tube ■ square ■ rectangular



LINEAR AND CIRCULAR CUTTING SERVICES



Cutting Machines
up to 4000 x 2000 x 800 mm



**Ring and Round
Cutting Machines**
up to Ø 2500 mm



Delivery
Times



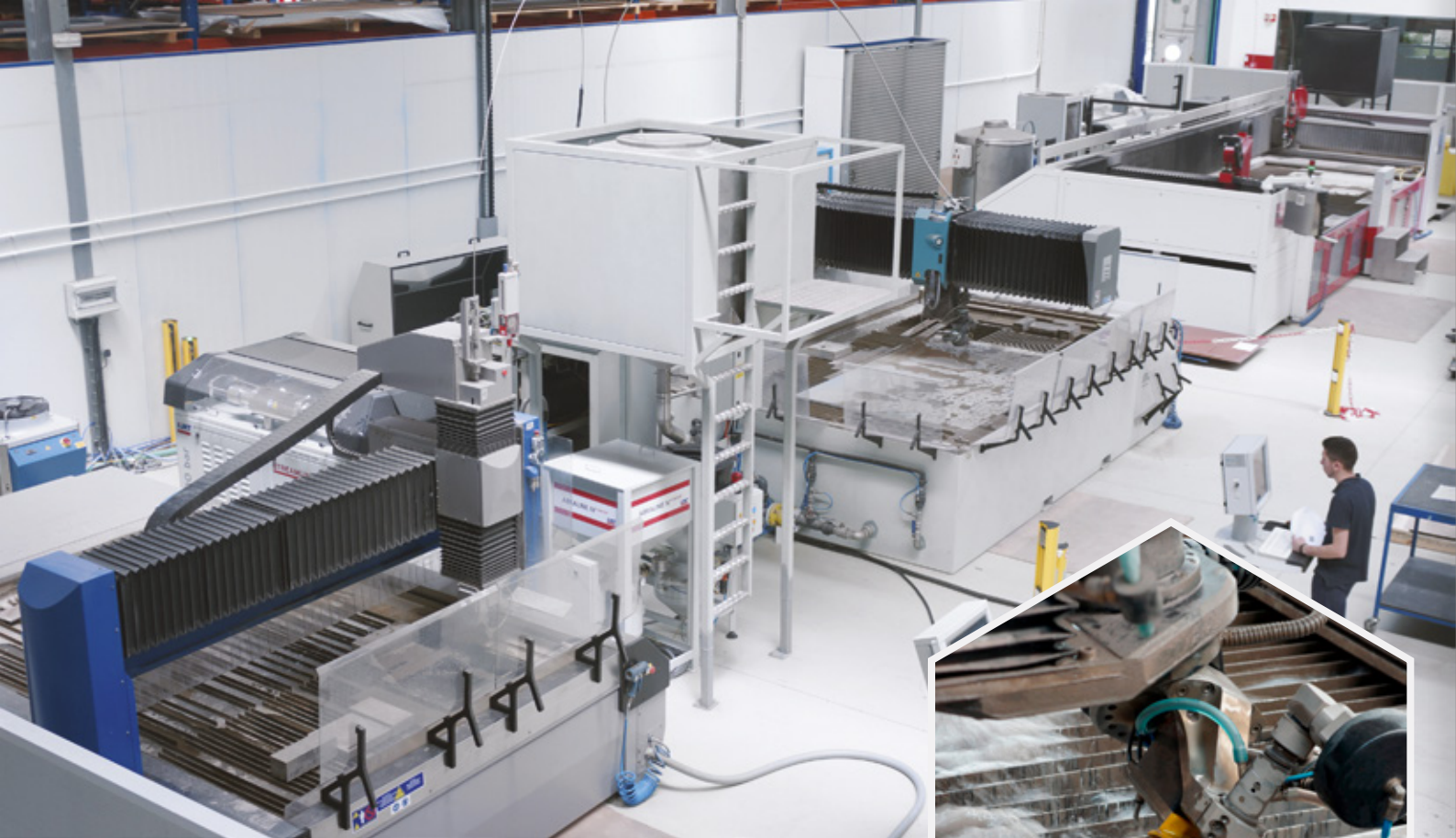
Quality
Assurance



Cost
Reduction

ADVANTAGES

- / Custom cutting to reduce material waste
- / Buy only what you need — we handle the leftovers
- / 24h/48h delivery times
- / High squareness and precision
- / Various cutting types
- / Specialized equipment to ensure maximum cut integrity
- / Waste separation through suction and recycling



REDUCE COSTS WITH WATERJET CUTTING SERVICE

6000 x 2000 x 200 mm

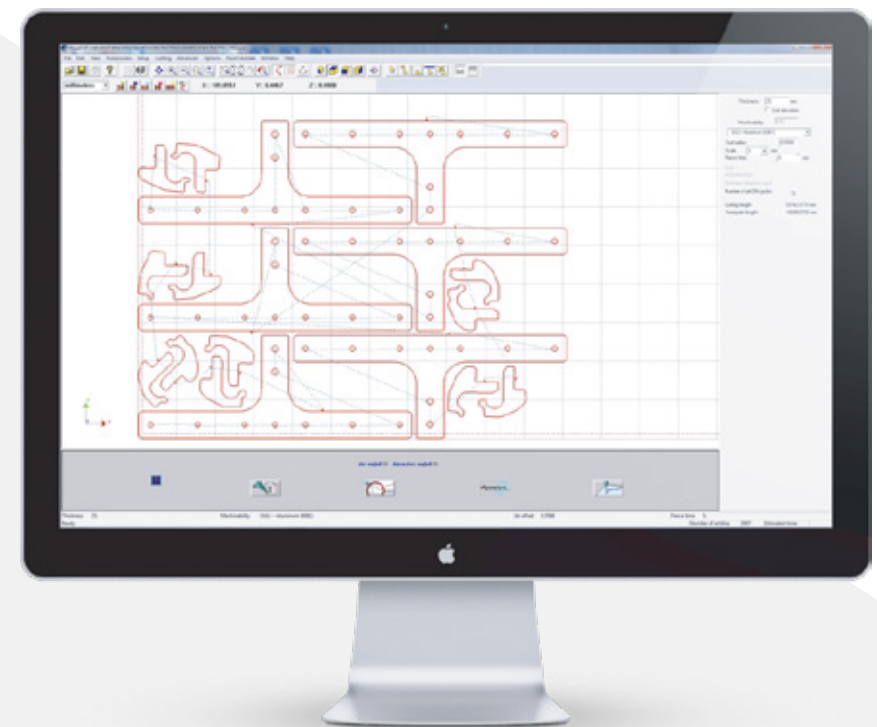
In our effort to provide the most modern cutting services available, we've invested in state-of-the-art equipment — especially in waterjet cutting systems.

Thanks to these resources, we've been able to improve our delivery times and significantly reduce costs for our clients by optimizing material usage and offering a full range of materials and services in one location — saving both time and money.

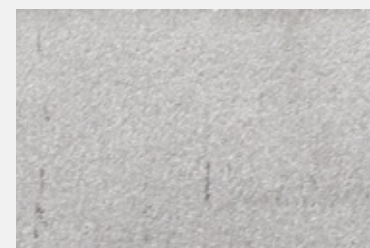


Machines
with 5-axis up to
6000 x 2000 x 200 mm

**MAXIMUM MATERIAL
UTILIZATION**



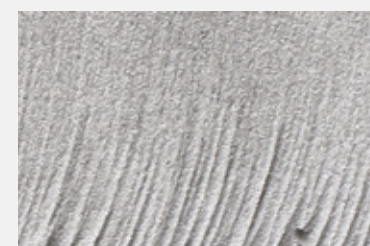
**FINISH
TYPES**



**Fine
Cut**



**Medium
Cut**



**Thick
Cut**



Production Time/Cost

ADVANTAGES

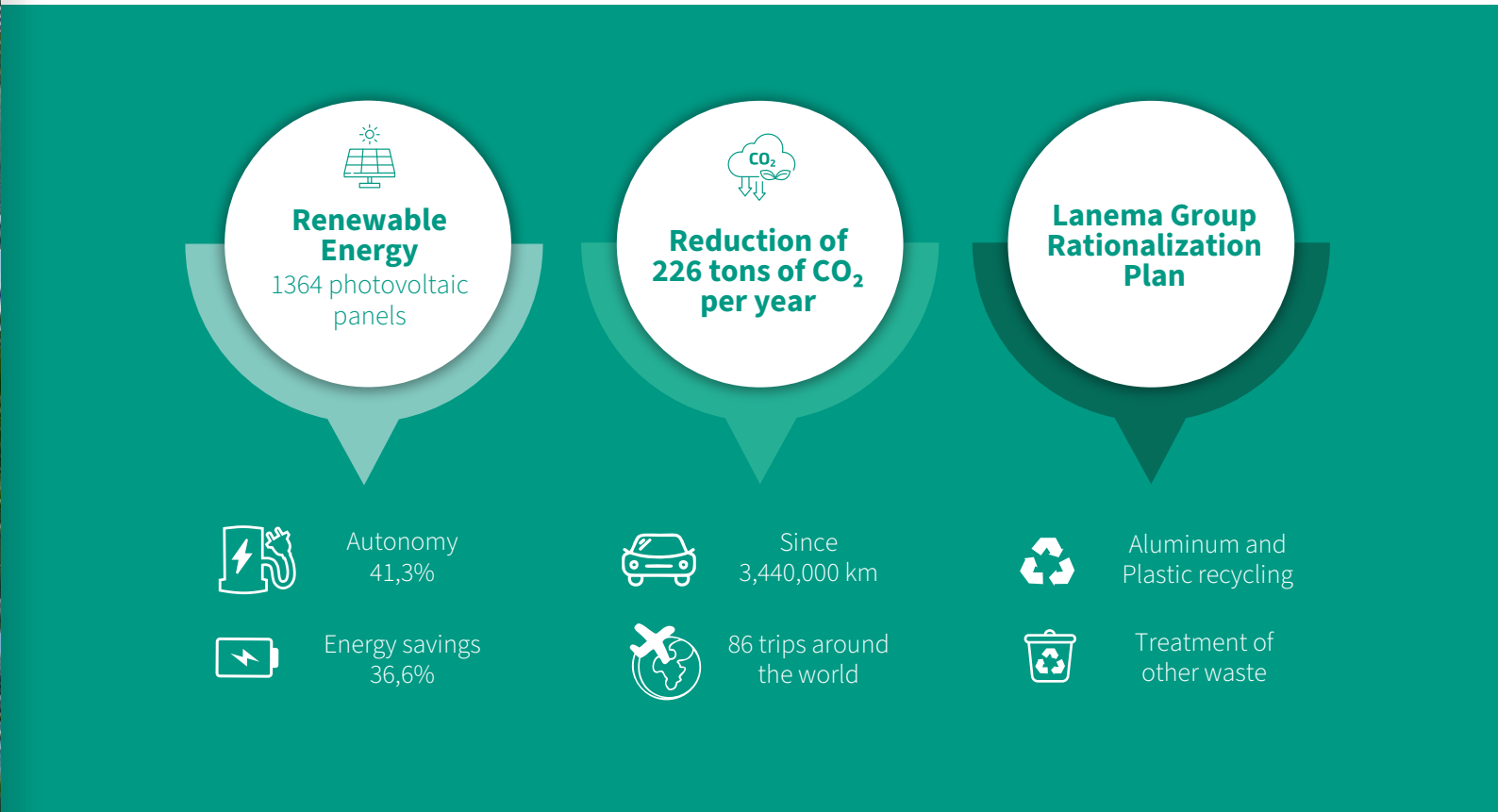
- / Waste reduction through specific dimensional optimization software
- / Average execution time in 24h/48h
- / Reduced machining time
- / Complex 5-axis cuts
- / Cuts in various material types
- / Cold cut, without molecular change of material
- / We can create the 3D (CAD) drawing
- / Clean and burr free cuts
- / More precise and faster than other conventional cuts



COMPLETE MATERIAL TRACEABILITY

Stock management system with QR codes for real-time control, ensuring optimal organization and instant location of materials.





SUSTAINABILITY
LANEMA GROUP GETTING GREENER



Aware of our social, economic and environmental responsibilities, at TecnoLanema we have put in place a streamlining and utilization plan which has enabled us to reduce our environmental footprint over the years.

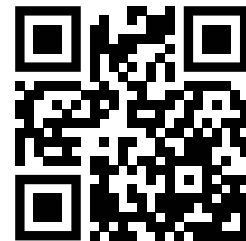
This result has been achieved by optimizing and virtualizing the production process, which not only generates gains in productivity, but also allows rationalizing and increasing energy efficiency, along with decreased use of paper, via our “no paper” project, thereby contributing toward the very sustainability of our corporate project.



APP LANEMA

The solution for your projects in the palm of your hand

Place your orders **anytime and anywhere**



DOWNLOAD
THE APP

Shop online
here

LANEMA CONNECT

Now on the Lanema Connect platform, you can check the status of your request, track your order, view open proposals, approved proposals, quality documents and access your invoices

extranet.lanema.pt



WHY POLY LANEMA?

Aiming to integrate all our clients' current and future projects, we list some of Poly Lanema's most notable characteristics and competitive advantages:

- / **Continuous focus on customer needs**
- / **Over 30 years of accumulated know-how**
- / **Multi-industry experience and expertise**
- / **Ongoing strategy of modernization and capacity building**
- / **Partnerships with leading European material suppliers**
- / **Unique combination of team + process + technology**
- / **Cutting center with advanced technology and diverse technical solutions**



SHAPING
YOUR PROJECTS



SHAPING YOUR PROJECTS

WWW.
POLYLANEMA.
PT/EN



Lanema de Alumínios e Plásticos, S.L.

C^a Ajalvir - Torrejón, Km 2,5
Pol. Compisa c/ de la Loma, 8-10
28864 Ajalvir (Madrid)

T: +34 91 884 42 53

GPS: 40° 30' 32.8
lanema@lanema.es

Poly Lanema, Lda.

Zona Industrial de Ovar
Rua do Brasil, N^o143
3880-108 Ovar - Portugal

T: +351 256 581 400
F: +351 256 581 419

GPS: 40° 52' 55.164" -8° 37' 30.8742"
polylanema@lanema.pt