

AW 5754 NON-SLIP (Al Mg3)

5754 alloy offers excellent resistance to corrosion (that caused by sea water); good weldability and mechanical resistance. It is applied in boats and vehicles; containers and household appliances; chemical and food industry; architecture and street furniture, in cisterns, tanks and shipbuilding.

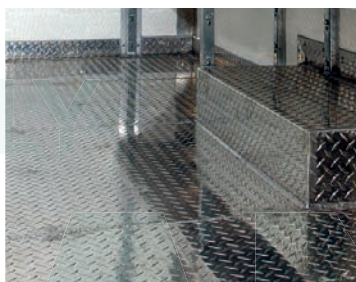
CHEMICAL COMPOSITION (WEIGHT %) (EN 573 - 3)

ELEMENTS	Si	Fe	Cu	Mn	Mg	Cr	Zn	Ti	Mn + Cr	Al
Minimum	-	-	-	-	2.6	-	-	-	0.1	-
Maximum	0.4	0.4	0.10	0.5	3.6	0.3	0.2	0.15	0.6	Rest

MECHANICAL PROPERTIES (EN 485 - 2)

TEMPER	THICKNESSES (mm)	Rm (MPa)		Rp0.2* (MPa)	A50 (%)	HB - BRINELL HARDNESS
		min.	max.			
O/H111	1.5 - 3	190	240	80	16	52
	3 - 6	190	240	80	18	52
	6 - 50	190	240	80	18	52

*Minimum values.

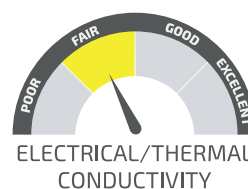


MAIN CHARACTERISTICS

- High mechanical resistance
- High resistance to corrosion

APPLICATIONS

- Anti-skid flooring
- Platforms and stairs
- Boards and corridors in industrial facilities
- Interior architecture





DENSITY	2.67 g/cm ³
MODULUS OF ELASTICITY	70 000 MPa
LINEAR EXPANSION COEFFICIENT	23.2 10 ⁻⁶
THERMAL CONDUCTIVITY	130 - 140 W/mK
ELECTRICAL CONDUCTIVITY	53 - 49 MS/m

DELIVERY PROGRAM

SHEETS

THICKNESSES (mm)	DIMENSIONS (mm)	THICKNESS W/ TEAR(mm)	WEIGHT (kg/m ²)	SHEET WEIGHT(kg)	STOCK H114
2	1000 x 2000	2.8/3.5	6.20	12.48	●
	1250 x 2500	2.8/3.5	6.20	19.50	●
	1500 x 3000	2.8/3.5	6.20	27.90	●
2.5	1000 x 2000	3.3/4.0	8.00	16.00	●
	1250 x 2500	3.8/4.0	8.00	25.00	●
	1500 x 3000	3.8/4.0	8.00	36.00	●
3	1000 x 2000	3.8/4.0	9.30	18.60	●
	1250 x 2500	3.8/4.0	9.30	29.06	●
	1500 x 3000	3.8/4.0	9.30	41.85	●
4	1000 x 2000	4.8/4.5	12.40	24.80	●
	1250 x 2500	4.8/4.5	12.40	38.75	●
	1500 x 3000	4.8/4.5	12.40	55.80	●
4.5	1500 x 3000	5.5/6.0	13.11	59	●
5	1000 x 2000	5.8/6.5	14.50	29.00	●
	1250 x 2500	5.8/6.5	14.50	45.00	●
	1500 x 3000	5.8/6.5	14.50	66.00	●

Average weights of production.
Other dimensions on request.